

# Seco

## 395-420W

High efficiency monofacial modules



**PERC**      **182mm**

● **PERC MODULE ADVANTAGE**



Less mismatch to get more power



Less power loss by minimizing the shading impact



Excellent low-light performance



Low BOS and LCOE



3 times EL test to ensure best quality

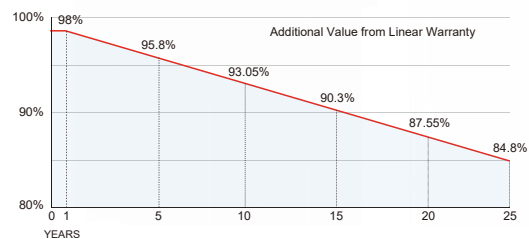


Superior load capacity  
2400 Pa wind load &  
5400 Pa snow load

● **INSURANCE**



● **WARRANTY**



● **QUALITY SYSTEM**

ISO9001 / ISO14001 / ISO45001

● **PRODUCT CERTIFICATION**



Guarantee on product material and workmanship



Linear power output warranty



## Mechanical Specifications

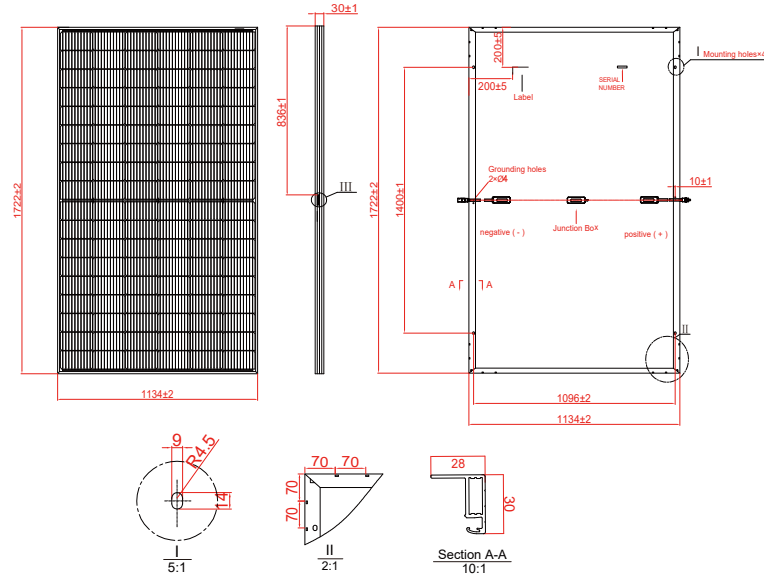
External Dimension	1722 x 1134 x 30 mm
Weight	21.5 kg
Solar Cells	PERC Mono(108 pcs)
Front Glass	3.2mm AR coating tempered glass, low iron
Frame	Anodized aluminium alloy
Junction Box	IP68, 3 diodes
Output Cables	4.0mm <sup>2</sup> , 250mm(+)/350mm(-) or Customized Length

## Packing Configuration

Container	20'GP	40'HQ
Pieces per Pallet	36	36
Pallets per Container	6	26
Pieces per Container	216	936

For details, please consult SERAPHIM.

## Technical drawing



## Electrical Characteristics

Module Type	SRP-395-BMD-HV		SRP-400-BMD-HV		SRP-405-BMD-HV		SRP-410-BMD-HV		SRP-415-BMD-HV		SRP-420-BMD-HV	
	STC	NOCT	STC	NOCT	STC	NOCT	STC	NOCT	STC	NOCT	STC	NOCT
Maximum Power -P <sub>mp</sub> (W)	395	298	400	301	405	304	410	308	415	311	420	314
Open Circuit Voltage -V <sub>oc</sub> (V)	37.01	34.56	37.12	34.64	37.22	34.73	37.32	34.81	37.42	34.90	37.52	34.99
Short Circuit Current -I <sub>sc</sub> (A)	13.50	10.91	13.60	10.99	13.70	11.07	13.80	11.15	13.90	11.23	14.00	11.31
Maximum Power Voltage -V <sub>mp</sub> (V)	30.69	28.68	30.81	28.82	30.93	28.91	31.05	29.05	31.16	29.19	31.28	29.33
Maximum Power Current -I <sub>mp</sub> (A)	12.88	10.37	12.99	10.44	13.10	10.51	13.21	10.59	13.32	10.66	13.43	10.73
Module Efficiency STC-η <sub>m</sub> (%)	20.23		20.48		20.74		21.00		21.25		21.51	
Power Tolerance(W)	(0, +4.99)											

STC: Irradiance 1000 W/m<sup>2</sup> module temperature 25°C AM=1.5 Power measurement tolerance: +/-3%; Voltage measurement tolerance: +/-3%; Current measurement tolerance: +/-4%  
NOCT: Irradiance 800 W/m<sup>2</sup> ambient temperature 20°C wind speed :1m/s Power measurement tolerance: +/-3%; Voltage measurement tolerance: +/-3%; Current measurement tolerance: +/-4%

## Temperature Ratings

Pmax Temperature Coefficient	-0.34 %/°C
Voc Temperature Coefficient	-0.26 %/°C
Isc Temperature Coefficient	+0.05 %/°C

## Application Conditions

Maximum System Voltage	1500V DC
Maximum Series Fuse Rating	25 A
Operating Temperature	-40~+85 °C
Nominal Operating Cell Temperature	45±2 °C
Mechanical Load	Front side 5400 Pa / Back side 2400 Pa

## I-V Curve

