

Seco







405-420W

High efficiency monofacial modules



PERC **182mm**

• PERC MODULE ADVANTAGE

-  Less mismatch to get more power
-  Less power loss by minimizing the shading impact
-  Excellent low-light performance
-  Low BOS and LCOE
-  3 times EL test to ensure best quality
-  Superior load capacity 2400 Pa wind load & 5400 Pa snow load

• QUALITY SYSTEM

ISO9001 / ISO14001 / ISO45001

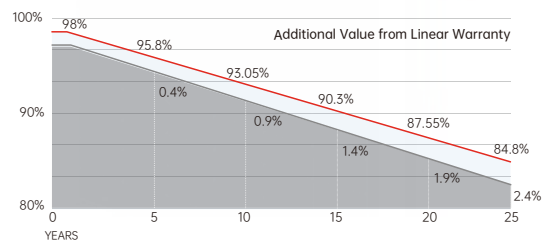
• PRODUCT CERTIFICATION



• INSURANCE

PICC

• WARRANTY



15 YEARS Guarantee on product material and workmanship

25 YEARS Linear power output warranty



Jiangsu Seraphim Solar System Co., Ltd.

Add: NO.10 TongShun road, Henglin Town, Wujin District, Changzhou, Jiangsu Province, China.
 Tel: +86-564-7736177 Email: info@seraphim-energy.com

Electrical Characteristics

Module Type	SRP-405-BMD-HV		SRP-410-BMD-HV		SRP-415-BMD-HV		SRP-420-BMD-HV	
	STC	NOCT	STC	NOCT	STC	NOCT	STC	NOCT
Maximum Power at STC (P_{mp})	405	304	410	308	415	311	420	314
Open Circuit Voltage (V_{oc})	37.22	34.73	37.32	34.81	37.42	34.90	37.52	34.99
Short Circuit Current (I_{sc})	13.70	11.07	13.80	11.15	13.90	11.23	14.00	11.31
Maximum Power Voltage (V_{mp})	30.93	28.91	31.05	29.05	31.16	29.19	31.28	29.33
Maximum Power Current (I_{mp})	13.10	10.51	13.21	10.59	13.32	10.66	13.43	10.73
Module Efficiency at STC (η_m)	20.74		21.00		21.25		21.51	
Power Measurement Tolerance	± 3%							
Power Sorting Tolerance(W)	-5W~+5W							
Maximum System Voltage	1500V DC							
Maximum Series Fuse Rating	25 A							

STC: Irradiance 1000 W/m² module temperature 25°C AM=1.5 Power measurement tolerance: +/-3%;
 Voltage measurement tolerance: +/-3%; Current measurement tolerance: +/-4%

Temperature Characteristics

Pmax Temperature Coefficient	-0.34 %/°C
Voc Temperature Coefficient	-0.26 %/°C
Isc Temperature Coefficient	+0.05 %/°C
Operating Temperature	-40 ~ +85 °C
Nominal Operating Cell Temperature(NOCT)	45±2 °C

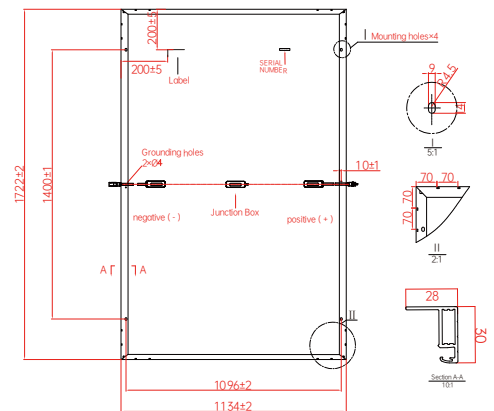
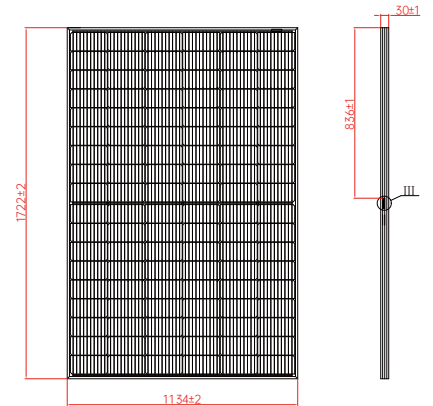
Mechanical Specifications

External Dimensions	1722 x 1134 x 30 mm
Weight	21.5 kg
Solar Cells	PERC Mono (108 pcs)
Front Glass	3.2mm AR coating tempered glass, low iron
Frame	Anodized aluminium alloy
Junction Box	IP68, 3 diodes
Output Cables	4.0mm ² , 250mm(+)/350mm(-) or Customized Length
Mechanical Load	Front side 5400Pa/ Rear side 2400Pa
Connector	Genuine MC4 EVO2/Zerun Z4S-abcde/QC Solar QC4.10-cds
Fire safety class	Class C

Packing Configuration

	1722 x 1134 x 30 mm	
Container	20'GP	40'HQ
Pieces per Pallet	36+4*	36
Pallets per Container	6	26
Pieces per Container	240	936

For details, please consult SERAPHIM.



I-V Curve

